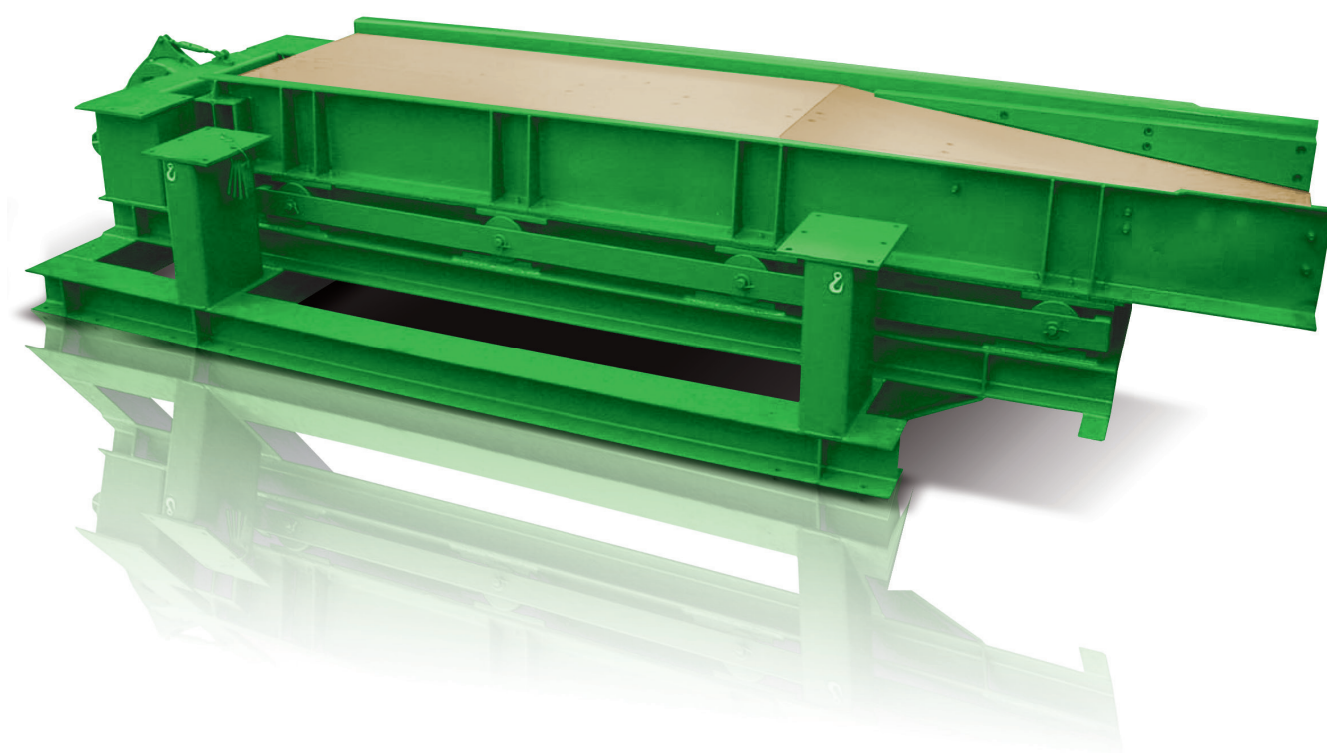


SERIES

ACR

HEAVY-DUTY RECIPROCATING FEEDER



MINING — CONSTRUCTION AGGREGATES — RECYCLING INDUSTRY

Feeder for bulk materials of all kinds

COMEC 

www.comec.it

TASK

COMEC heavy-duty reciprocating feeders are used for feeding and as a replacement for apron feeders.



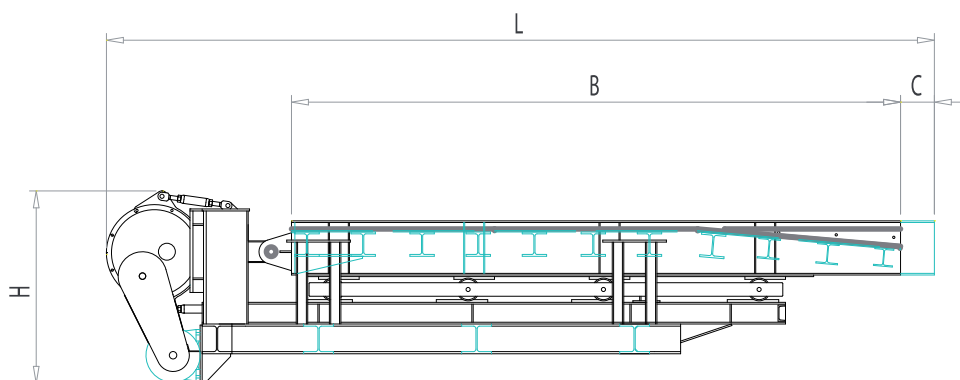
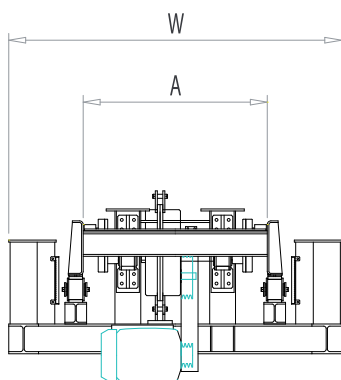
SOLUTION

Even very coarse feeding material is conveyed due to the back- and forward movement of the reciprocating plate. All parts in contact with the material are available in a long wearing quality.

BENEFIT

The robust construction of the COMEC heavy-duty feeder withstands also in heavy-duty applications without a problem. A long service life and easy maintenance make for a highly economical concept.

Technical data										
Model	Dimensions						Max. Output	Max. feeding size	Power	Weight
	L	W	H	A	B	C	m³/h	mm	kW	kg
ACR 80	4630	1700	1205	800	3500	180	80	650	7,5	2950
ACR 90	4630	1800	1205	900	3500	180	90	750	7,5	3375
ACR 110	5200	2230	1420	1100	4000	180	110	950	11	5200
ACR 130	6040	2470	1630	1300	4500	180	200	1000	18,5	6450
ACR 145	7757	2550	2345	1450	6000	250	400	1100	45	12300



COLOUR

COMEC offers the opportunity to customize both your equipment and production lines with your desired colours, in order to support your own corporate design.

Features and sizes are not binding and Comec-Binder S.r.l. reserves to effect modifications or improvements for commercial and technical reasons at any moment and without notice.